

RUIZ



504/100 De Burgh Street Lyneham ACT

1  1  1 

Available from: 24/01/2025

Apply <https://www.ruizproperty.com.au/lease/act/inner-north/lyneham/residential/apartment/7846562> Now:

Type : Apartment
Building Size : 88 sqm
View : <https://www.ruizproperty.com.au/lease/act/inner-north/lyneham/residential/apartment/8213873>

Welcome to The Sullivan - where luxury and convenience meet

Less than 3km north of the Canberra's CBD, The Sullivan at Northbourne Village combines an imposing presence along Northbourne Avenue with the subtler delights of a charming suburban backdrop. This is city life at its best.

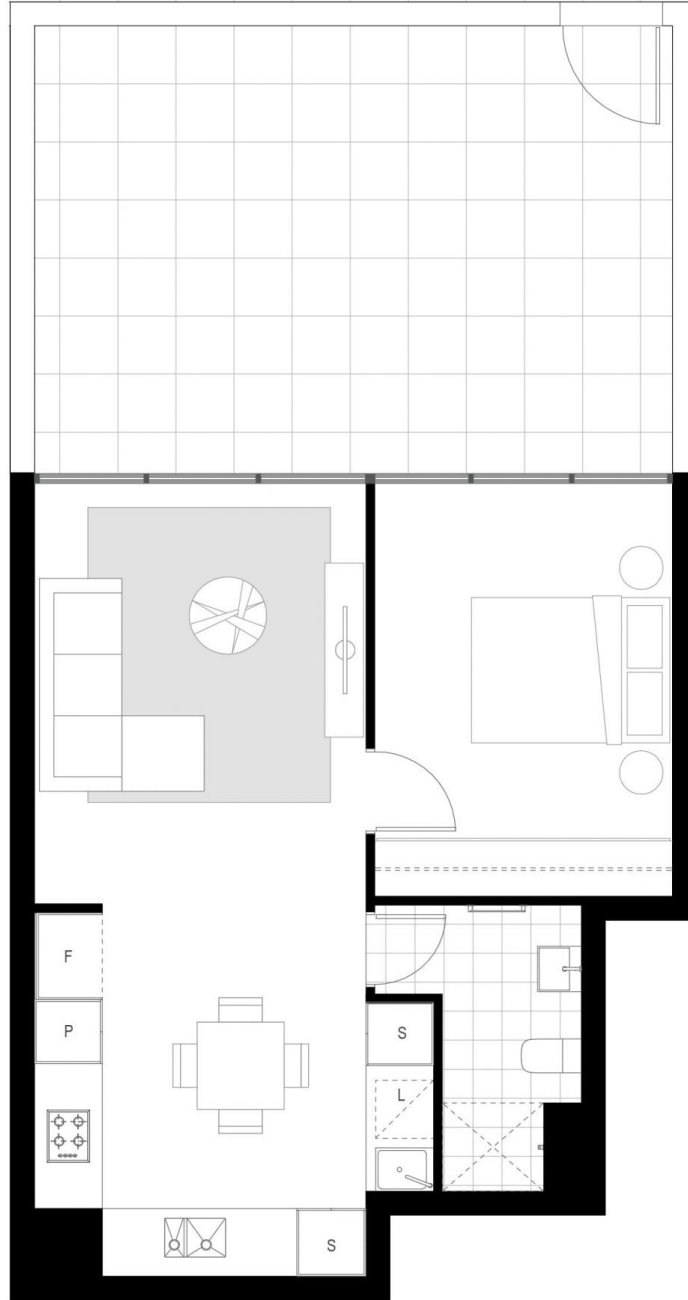
This one bedroom apartment is not like the others. This

[For full version visit the website](#)



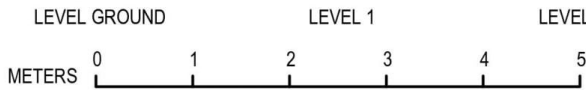
Khloe Zhang
0492 947 050

<https://www.ruizproperty.com.au>



LEGEND
 F - Fridge
 L - Laundry
 S - Storage
 P - Pantry

UNIT NUMBERS
 UNIT NO. 111
 Grand total: 1



JWLAND

JWLAND DEVELOPMENT PTY LTD
 P 02 6180 0100 E info@jwland.com.au
 SUITE 111, LEVEL 1, 45 ANSLIE AVENUE, BRADDON ACT, 2612

LYNEHAM STAGE-2

IMPORTANT NOTES:
 DRAWINGS SHALL NOT BE USED FOR CONSTRUCTION PURPOSES.
 DRAWINGS ARE SUBJECT TO CHANGE DURING FINAL DETAIL DESIGN PHASES.
 REFER TO RELEVANT ELEVATION DRAWINGS FOR BALUSTRADE DESIGN

MARKETING - UNIT TYPE 34

NAME	AREA
EXTERNAL	33 m ²
INTERNAL	52 m ²
NO OF BEDS	NO OF BATH
1	1

FRONT.

FRONT ARCHITECTS PTY LTD
 SUITE 111, LEVEL 1, 45 ANSLIE AVENUE, BRADDON ACT, 2612
 P 02 6180 0100 E info@frontstudio.com.au

© COPYRIGHT FRONT ARCHITECTS PTY LTD 2015
 ANY FORM OF REPRODUCTION OF THIS DRAWING IN FULL OR IN PART WITHOUT THE WRITTEN PERMISSION OF THE FRONT ARCHITECTS PTY LTD CONSTITUTES AN INFRINGEMENT OF COPYRIGHT