


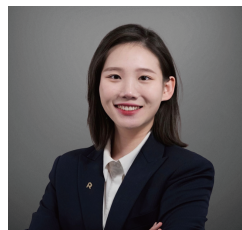


7/19 Thynne Street Bruce ACT

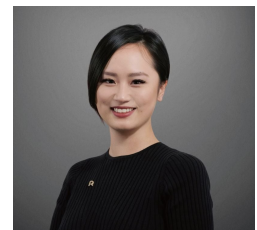
4  3  2 

Discover your dream home in this brand-new townhouse nestled in a prime location complex called IVES. Enjoy the convenience of being close to everything you need. The University of Canberra, schools, hospitals, parks, shopping centre and public transportation are just a stone's throw away. Bus routes are available in front of the complex, including rapid buses only 5 mins away. Whether it's a quick commute to work, a stroll in the park, or a visit to a nearby school, everything is within reach. In addition, restaurants and cafe Momo, including a grocery store in the near future will complete this complex.

View : <https://www.ruizproperty.com.au/lease/act/belconnen/bruce/residential/townhouse/7882465>



Gloria Luo
02 6109 7667



Kaylee Wang
02 6109 7667

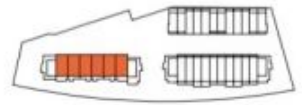
Features include:

- Views to Telstra Tower & Black Mountain from master bedroom
- Beautiful covered entertaining area
- Neutral colour scheme throughout

IVES

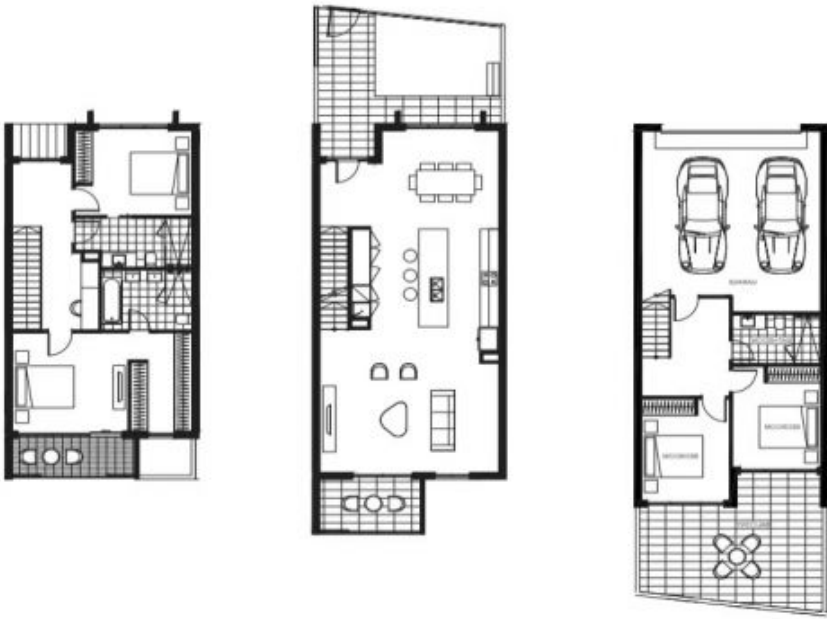
4B-1

Bedrooms	4
Bathrooms	3
Ck. Spaces	-
Living	188m ²
Conquants	37m ²
Balcony	33-48m ²
Garage	38m ²
Total	334-300m²
Units	03. 04. 06
Mixed	03. 02. 03



ives.tpdynamics.com.au

TP Dynamics is a registered provider of real estate services. All information is provided for general information only and does not constitute an offer of real estate services. For more information, please contact your local real estate agent. TP Dynamics is not responsible for the accuracy of the information provided. All rights reserved. © 2024 TP Dynamics.



FIRST FLOOR

GROUND

LOWER GROUND