

RUIZ



320/351 Northbourne Avenue Lyneham ACT

1  1  1 

Perfectly positioned less than 3km north of Canberra's CBD, The Sullivan at Northbourne Village delivers city life at its best.

Work-life balance is a given. With transport at your front door and expansive parklands behind, you don't have to choose between livelihood and lifestyle.

We have a range of 1-2 bedroom apartments

Features:

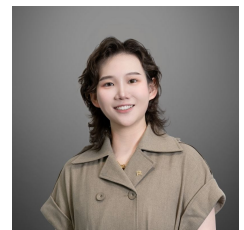
- Brand new
- East facing
- 1 bedroom 1 bathroom 1 parking space
- Fisher & Paykel kitchen appliances, including induction

[For full version visit the website](https://www.ruizproperty.com.au/lease/act/inner-north/lyneham/residential/apartment/7847679)

Type : Apartment
Building Size : 61 sqm
View : <https://www.ruizproperty.com.au/lease/act/inner-north/lyneham/residential/apartment/7847679>



Kaylee Wang
0421 668 067



Gloria Luo
0402 267 667

